

beverage
bar

Beverage



beverage bar



spirits

Jim Beam Bourbon, Grant's Scotch, Seagram's 7 Blended Whiskey, Bombay Original Gin, SVEDKA Vodka, Sauza Gold Tequila and Bacardi Rum

domestic premium & imported beer

Budweiser, Bud Light, Coors Light, Miller Light, Heineken Light, Corona Extra, Corona Light, Guinness Draught in a Can, Heineken and St. Pauli Girl's Non-Alcoholic

craft brewed beer

Sam Adams Boston Lager, Sam Adams Seasonal and Blue Moon

hosted consumption bar / cash bar

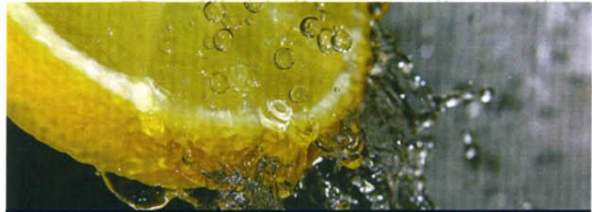
Spirits	7.00	7.50
Domestic Beer	6.50	6.75
Imported Beer	7.25	7.50
Non Alcoholic Beer	6.00	6.50
Craft Brewed Beer	7.25	7.50
Wine by the Glass	6.50	7.50
Soft Drinks	2.50	3.50
Mineral Waters	3.50	4.50
Bottled Juices	3.00	3.50
After Dinner Liqueurs	7.50	8.00

open bar

One Hour	18.00 per guest
Two Hours	24.00 per guest
Three Hours	30.00 per guest
Four Hours	36.00 per guest
Five Hours	42.00 per guest

Also available are premium wines, spirits and liqueurs. Additionally please see our specialty cocktail menu or ask your sales manager to tailor a beverage menu for your specific event.

*farm fresh sun ripened just picked
off the vine savory artisan farm
naturally delicious farm fresh sun
just picked local off the vine
artisan farm to table naturally
farm fresh sun ripened just picked
off the vine savory artisan farm*



Citizens Bank Park
267.570.2347

*farm fresh sun ripened just picked
off the vine savory artisan farm*

Our onsite personnel must dispense all beverages. Bartenders are staffed one(1) per 100 guests. A \$95.00 per bartender fee will apply for the first four (4) hours of service. A \$50.00 per hour additional charge will be applied after four (4) hours of service.

For events where there are bars with no food a wait staff fee of \$95.00 will apply. This fee covers the labor required to set-up, breakdown and service the event. These events are staffed one(1) wait staff per 50 guests, two (2) hour minimum.

These fees do not represent a tip, gratuity or service charge for wait staff employees, services employees or services bartenders.

All local taxes and fees apply. Pricing subject to change. © 2009 ARAMARK - All Rights Reserved